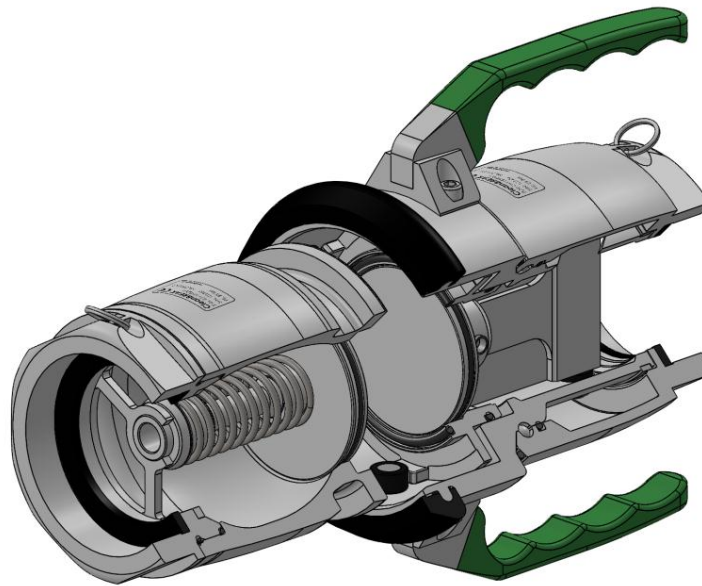


## Technical Data: 119mm CleanBREAK



### Applications:

The 119mm – 3” (80mm nominal bore) Spill Prevention Coupling is recommended for all types of bulk liquid product transfer, where product spillage and environmental contamination needs to be minimised.

### Features:

- Fully compatible with STANAG 3756 & Team Specification couplings
- High flow rates of up to 2000 LPM
- Integral swivel reduces hose torsional forces during the coupling of units
- Sleek and elegant design, with etched makers mark, to reduce potential debris traps in high cleanliness areas

### Connections:

Available with BSP, NPT thread forms and flange adaptors.

### Specifications:

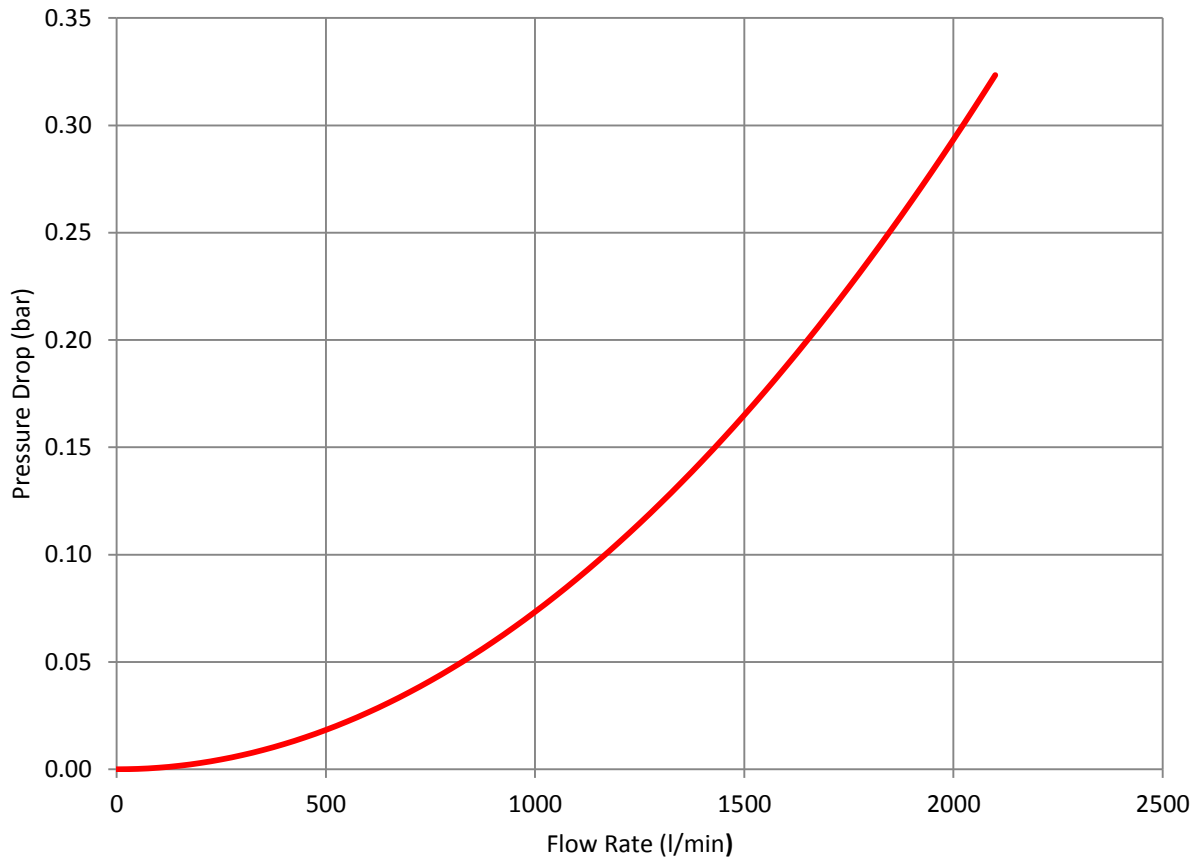
Material	Maximum Working Pressure (Bar / psi)	Test Pressure (Bar / psi)	Burst Pressure (Bar / psi)	Maximum Coupling Pressure (Bar / psi)
Aluminium	25 / 363	37.5 / 544	125 / 1813	4 / 58
Stainless Steel	25 / 363	37.5 / 544	125 / 1813	4 / 58

### Materials:

Available in Aluminium Alloy and 316L Stainless Steel, with Viton Seals fitted as standard. Other seals types available on request.

**Performance:**

119mm Performance Curve

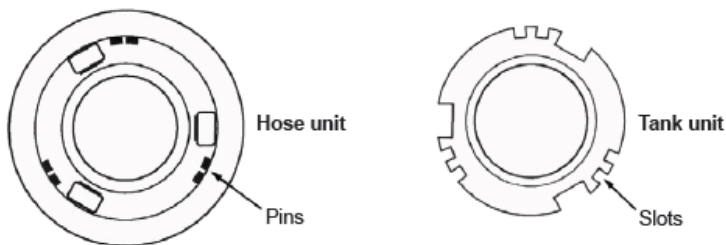


Test Fluid: Water. Test Temperature: 20°C. Density: 1. Viscosity: 1 mm<sup>2</sup>/s

**Selectivity:**

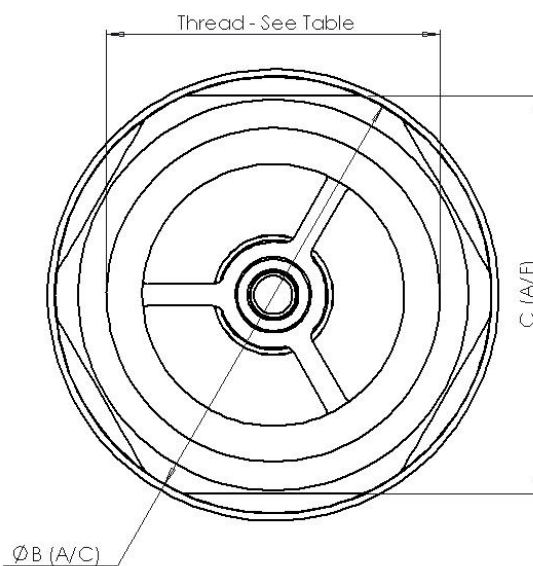
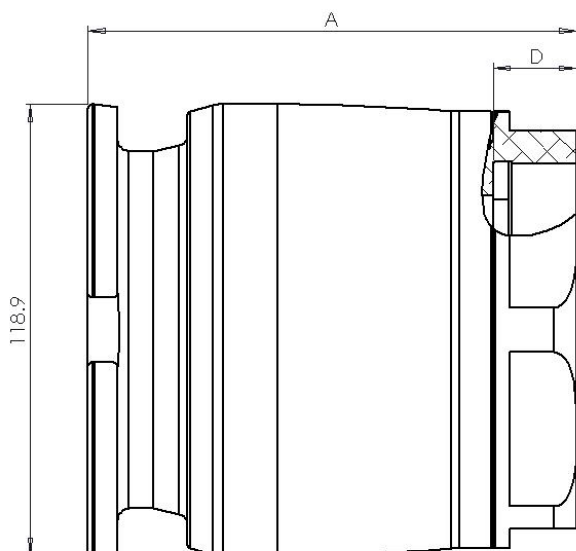
Selectivity is available as an option, to avoid cross contamination on connecting the wrong couplings together.

Each unit has a number of selective positions, designated by a coded part number.



### 119mm Tank Units Technical Data

Ø119mm Threaded Tank Adaptor							Dimensions (mm)			
d. Ø	DN	Connection	Material	Seal	Part Number	Weight (kg)	A	B	C	D
Ø119	80	3" BSP (female)	Aluminium	FKM	CT119AGZ01	1.81	129	115	105	22
			Stainless Steel	FKM	CT119SGZ01	4.08				
		3" NPT (female)	Aluminium	FKM	CT119AGY01	1.93	136			26
			Stainless Steel	FKM	CT119SGY01	4.35				



## Ø119mm Hose Units Technical Data

Ø119mm Threaded Hose Unit							Dimensions (mm)			
d. Ø	DN	Connection	Material	Seal	Part Number	Weight (kg)	A	B	C	D
Ø119	80	3" BSP (female)	Aluminium	FKM	CH119AGZ01	4.15	181	113	105	22
			Stainless Steel	FKM	CH119SGZ01	8.20				
		3" NPT (female)	Aluminium	FKM	CH119AGY01	4.25	185			26
			Stainless Steel	FKM	CH119SGY01	8.32				

